



ELTHAM
CHURCH OF ENGLAND
PRIMARY SCHOOL
SINCE 1814


ONLINE SAFETY POLICY

First Initiated: February 2010
Reviewed: September 2023
Next review: September 2024



Introduction

Key people / dates

 <p>ELTHAM CHURCH OF ENGLAND PRIMARY SCHOOL SINCE 1814</p>	Designated Safeguarding Lead (DSL), with lead responsibility for filtering and monitoring	Matthew Wills
	Online safety / webfiltering / safeguarding link governor	Daniel Bull
	Data Protection Officer	Sarah Ktob
	PSHE/RHE lead Computing lead	Lisa Leonard Alice Grattan
	Network manager / other technical support	ATS
	Date this policy was reviewed and by whom	Alice Grattan, September 2023
	Date of next review and by whom	September 2024

What is this policy?

At Eltham Church of England Primary School, the welfare and well-being of our pupils is paramount.

Online safety is an integral part of safeguarding that welfare and well-being at Eltham Church of Eltham, and we take a whole school, cross-curricular approach that includes close collaboration between key school leads. Accordingly, this policy is written in line with 'Keeping Children Safe in Education' 2023 (KCSIE), 'Teaching Online Safety in Schools' 2019, statutory RSHE guidance 2019 and other statutory documents. It complements existing and forthcoming subjects including our Relationships and Health Education (statutory Relationships, Sex and Health Education)) and Computing curricula; it is designed to sit alongside the school's statutory Safeguarding Policy. Any issues and concerns with online safety must follow the school's safeguarding and child protection procedures.

Who is it for: when is it reviewed?

This policy is a living document, subject to full annual review but also amended where necessary during the year in response to developments in the school and local area. Although many aspects will be informed by legislation and regulations, staff, governors, pupils and parents are involved in writing and reviewing the policy (KCSIE stresses making use of teachers' day-to-day experience on the ground). This will help ensure all stakeholders understand the rules that are in place and why, and that the policy affects day-to-day practice. Acceptable Use Policies for different stakeholders help with this –these are reviewed alongside this overarching policy. Any changes to this policy should be immediately disseminated to all the above stakeholders.

Who is in charge of online safety?

KCSIE makes clear that “the designated safeguarding lead should take **lead** responsibility for safeguarding and child protection (including online safety).” At Eltham CofE, the designated safeguarding lead is Matthew Wills.

How will this policy be communicated?

This policy can only impact upon practice if it is a (regularly updated) living document. It must be accessible to and understood by all stakeholders. It will be communicated in the following ways:

- Posted on the school website
- Available on the internal staff network/drive
- Part of school induction pack for all new staff (including temporary and non-classroom-based staff)
- Integral to safeguarding updates and training for all staff (especially in September refreshers)
- Clearly reflected in the Acceptable Use Policies (AUPs) for staff, volunteers, contractors, governors, pupils and parents/carers (which must be in accessible language appropriate to these groups).
- AUPs issued to whole school community, on entry to the school, with annual reminders of where to find them if unchanged, and reissued if updated after annual review



Contents

Introduction	1
Key people / dates	1
What is this policy?	1
Who is it for; when is it reviewed?	1
Who is in charge of online safety?	2
How will this policy be communicated?	2
Contents	3
Aims	3
Further Help and Support	4
Scope	4
Roles and responsibilities	4
Education and curriculum	5
Handling online-safety concerns and incidents	5
Actions where there are concerns about a child	6
Data protection and cyber security	8
Appropriate filtering and monitoring	8
Messaging/commenting systems (incl. email, learning platforms & more)	9
Authorised systems	9
Behaviour / usage principles	10
Online storage or learning platforms	10
School website	11
Digital images and video	11
Social Media	12
Eltham Church of England's SM presence	12
Staff, pupils' and parents' SM presence	12
Device usage	14
Personal devices including wearable technology and bring your own device (BYOD)	14
Network / internet access on school devices	14
Trips / events away from school	15
Searching and confiscation	15
Appendices and other relevant documents	16



Aims

This policy aims to:

- Set out expectations for all Eltham Church of England Primary School community members' online behaviour, attitudes and activities and use of digital technology (including when devices are offline)
- Help safeguarding and senior leadership teams to have a better understanding and awareness of all elements of online safeguarding through effective collaboration and communication with technical colleagues (e.g. for filtering and monitoring), curriculum leads (e.g. RSHE) and beyond.
- Help all stakeholders to recognise that online/digital behaviour standards (including social media activity) must be upheld beyond the confines of the school gates and school day, and regardless of device or platform
- Facilitate the safe, responsible, respectful and positive use of technology to support teaching & learning, increase attainment and prepare children and young people for the risks and opportunities of today's and tomorrow's digital world, to survive and thrive online
- Help school staff working with children to understand their roles and responsibilities to work safely and responsibly with technology and the online world:
 - for the protection and benefit of the children and young people in their care, and
 - for their own protection, minimising misplaced or malicious allegations and to better understand their own standards and practice
 - for the benefit of the school, supporting the school ethos, aims and objectives, and protecting the reputation of the school and profession
- Establish clear structures by which online misdemeanours will be treated, and procedures to follow where there are doubts or concerns (with reference to other school policies such as Behaviour Policy or Anti-Bullying Policy)

Further Help and Support

Internal school channels should always be followed first for reporting and support, as documented in school policy documents, especially in response to incidents, which should be reported in line with our Safeguarding Policy. The DSL will handle referrals to local authority multi-agency safeguarding hubs (MASH) and normally the Headteacher will handle referrals to the LA designated officer (LADO).

Scope

This policy applies to all members of the school community (including teaching and support staff, supply teachers and tutors engaged under the DfE National Tutoring Programme, governors, volunteers, contractors, students/pupils, parents/carers, visitors and community users) who have access to our digital technology, networks and systems, whether on-site or remotely, and at any time, or who use technology in their school role.

Roles and responsibilities

This school is a community and all members have a duty to behave respectfully online and offline, to use technology for teaching and learning and to prepare for life after school, and to immediately report any concerns or inappropriate behaviour, to protect staff, pupils, families and the reputation of the school. We learn together, make honest mistakes together and support each other in a world that is online and offline at the same time.

For specific roles and responsibilities, see Online Safety Policy 2023 Appendix 1

Education and curriculum

At Eltham Church of England Primary, we recognise that online safety and broader digital resilience must be thread throughout the curriculum. However, the following subjects have the clearest online safety links:

- Relationships and Health Education (RHE) – our response to the statutory Relationships, Health and Sex Education
- Computing

It is the role of all staff to identify opportunities to thread online safety through all school activities, both outside the classroom and within the curriculum, supporting curriculum/stage/subject leads, and making the most of unexpected learning opportunities as they arise (which have a unique value for pupils).

Whenever overseeing the use of technology (devices, the internet, new technology such as augmented reality, etc) in school or setting homework tasks, all staff should encourage sensible use, monitor what pupils/students are doing and consider potential dangers and the age appropriateness of websites, using appropriate filtering and monitoring.

Equally, all staff should carefully supervise and guide pupils when engaged in learning activities involving online technology (including, extra-curricular, extended school activities if relevant and remote teaching), supporting them with search skills, critical thinking (e.g. fake news, use of Chat GPT and AI technologies), age appropriate materials and signposting, and legal issues such as copyright and data law.

Annual reviews of curriculum plans / schemes of work (including for SEND pupils) are used as an opportunity to update and incorporate learning about all elements of online safety.

Handling online-safety concerns and incidents

It is vital that all staff recognise that online safety is a part of safeguarding (as well as being a curriculum strand of Computing and RHE).

General concerns must be handled in the same way as any other safeguarding concern; safeguarding is often referred to as a jigsaw puzzle, so all stakeholders should err on the side of talking to the online-safety lead / designated safeguarding lead to contribute to the overall picture or highlight what might not yet be a problem.

Support staff will often have a unique insight and opportunity to find out about issues first in the playground, corridors, toilets and other communal areas outside the classroom (particularly relating to bullying and sexual harassment and violence).

School procedures for dealing with online safety will be mostly detailed in the following policies (primarily in the first key document):

- Safeguarding and Child Protection Policy
- Anti-Bullying Policy
- Behaviour for Learning Policy (including school sanctions)
- Acceptable Use Policies

- Data Protection Policy, agreements and other documentation (e.g. privacy statement and consent forms for data sharing, image use etc)

This school commits to take all reasonable precautions to ensure online safety, but recognises that incidents will occur both inside school and outside school (and that those from outside school will continue to impact pupils when they come into school or during extended periods away from school). All members of the school are encouraged to report issues swiftly to allow us to deal with them quickly and sensitively through the school's escalation processes.

Any suspected online risk or infringement should be reported to the Designated Safeguarding Lead on the same day – where clearly urgent, it will be made by the end of the lesson.

Any concern/allegation about staff misuse is always referred directly to the Headteacher, unless the concern is about the Headteacher in which case the complaint is referred to the Chair of Governors and the LADO (Local Authority's Designated Officer). Staff may also use the NSPCC Whistleblowing Helpline.

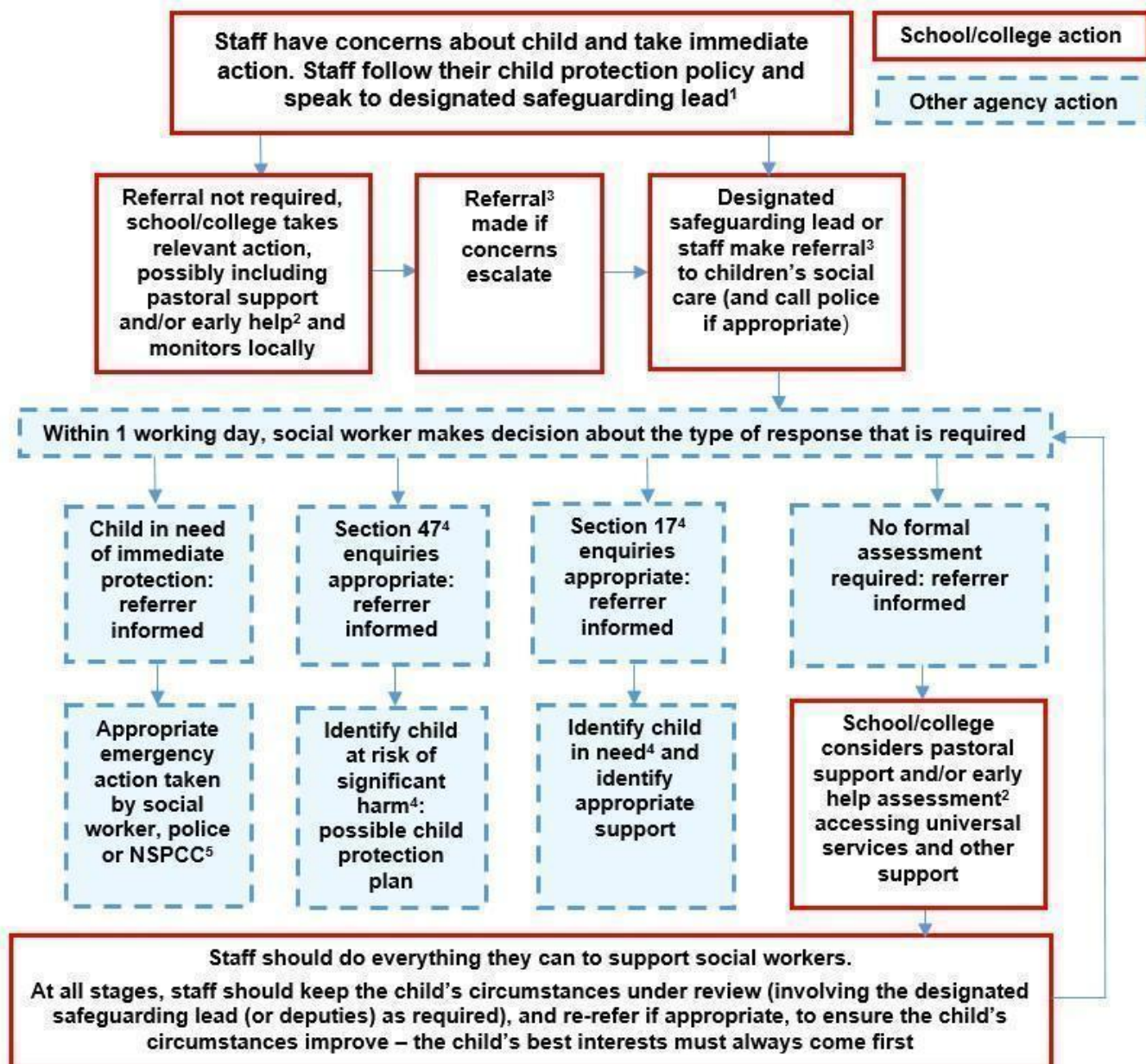
The school will actively seek support from other agencies as needed (i.e. the local authority, LGfL, UK Safer Internet Centre's Professionals' Online Safety Helpline (POSH), NCA CEOP, Prevent Officer, Police, IWF). We will inform parents/carers of online safety incidents involving their children, and the Police where staff or pupils engage in or are subject to behaviour which we consider is particularly disturbing or breaks the law (particular procedures are in place for sexting and upskirting; see section below).

The school will evaluate whether reporting procedures are adequate for any future closures/lockdowns/isolation etc and make alternative provisions in advance where these might be needed.

Actions where there are concerns about a child

The following flow chart is taken from page 22 of Keeping Children Safe in Education 2023 as the key education safeguarding document. As outlined previously, online safety concerns are no different to any other safeguarding concern.

Many of these risks are mentioned in KCSIE 2023, e.g. extra-familial harms where children are at risk of abuse or exploitation to multiple harms in situations outside their families including sexual exploitation, criminal exploitation, serious youth violence, upskirting and sticky design and they are described in more detail in Appendix 2 of the Online Safety Policy 2023.



Data protection and cyber security

All pupils, staff, governors, volunteers, contractors and parents are bound by the school's data protection policy. It is important to remember that there is a close relationship between both data protection and cybersecurity and a school's ability to effectively safeguard children. Schools are reminded of this in KCSIE which also refers to the DfE Standards of Cybersecurity for the first time in 2023.

Schools should remember that data protection does not prevent, or limit, the sharing of information for the purposes of keeping children safe. As outlined in *Data protection in schools, 2023*, "It's not usually necessary to ask for consent to share personal information for the purposes of safeguarding a child." And in KCSIE 2023, "The Data Protection Act 2018 and UK GDPR do not prevent the sharing of information for the purposes of keeping children safe. Fears about sharing information must not be allowed to stand in the way of the need to safeguard and promote the welfare and protect the safety of children."

Appropriate filtering and monitoring

Keeping Children Safe in Education has long asked schools to ensure "appropriate" webfiltering and monitoring systems which keep children safe online but do not "overblock".

Since KCSIE 2023, in recognition of the importance of these systems to keeping children safe, the designated safeguarding lead now has lead responsibility for filtering and monitoring (see page 1 for the DSL name and the named governor with responsibility for filtering and monitoring).

Schools are also asked to follow the new DfE filtering and monitoring standards, which require them to:

- identify and assign roles and responsibilities to manage filtering and monitoring systems
- review filtering and monitoring provision at least annually
- block harmful and inappropriate content without unreasonably impacting teaching and learning
- have effective monitoring strategies in place that meet their safeguarding needs

ALL STAFF need to be aware of the changes and renewed emphasis and play their part in feeding back about areas of concern, potential for students to bypass systems and any potential overblocking. They can submit concerns at any point via email and will be asked for feedback at the time of the regular checks which will now take place.

Staff will be reminded of the systems in place and their responsibilities at induction and start of year safeguarding as well as via AUPs and regular training reminders in the light of the annual review and regular checks that will be carried out.

At Eltham Church of England Primary School:

- web filtering is provided by Lgfl using WebScreen on school site and for school devices used in the home
- changes can be made by the DSL and ATS
- overall responsibility is held by the DSL
- technical support and advice, setup and configuration are from ATS
- regular checks are made half termly by ATS to ensure filtering is still active and functioning everywhere. These are evidenced and reported to the DSL.
- an annual review is carried out



According to the DfE standards, “a variety of monitoring strategies may be required to minimise safeguarding risks on internet connected devices and may include:

- physically monitoring by staff watching screens of users
- live supervision by staff on a console with device management software
- network monitoring using log files of internet traffic and web access
- individual device monitoring through software or third-party services

At Eltham Church of England Primary School, we use physical monitoring by staff, watching the screen of users as they are using them. This is monitoring is verified by bi-annual reviews by SLT. In addition, there is automatic network monitoring using log files of internet traffic and web access as provided by WebScreen. This is also reviewed on a bi-annual basis to monitor for ‘over-blocking’ as well as usage.

Messaging/commenting systems (incl. email, learning platforms & more)

Authorised systems

- Staff at this school use the LgFL StaffMail system for all school communications
- Pupils at this school can communicate with staff using Google Classroom messaging

This system is linked to the USO authentication system and is fully auditable, trackable and managed by LGfL on behalf of the school. This is for the mutual protection and privacy of all staff, pupils and parents, as well as to support data protection.

In addition, in EYFS and KS1, staff at this school use Tapestry to communicate with parents.

General principles for email and messaging use are as follows:

- Email and the messaging functionality in Google Classroom are the only means of electronic communication to be used between staff and pupils. Any unauthorised attempt to use a different system may be a safeguarding concern or disciplinary matter and should be notified to the DSL (if by a child) or to the Headteacher (if by a staff member).
- Email and messages may only be sent using the email systems above or Google Classroom. There should be no circumstances where a private email is used; if this happens by mistake, the DSL/Headteacher/DPO (the particular circumstances of the incident will determine whose remit this is) should be informed immediately.
- Staff or pupil personal data should never be sent/shared/stored on email.
 - If data needs to be shared with external agencies, USO-FX and Egress systems are available from LGfL.
 - Internally, staff should use the school network or Google Workspace, including when working from home when remote access is available via Freedom2Roam.

Any systems above are centrally managed and administered by the school or authorised IT partner (i.e. they can be monitored/audited/viewed centrally; are not private or linked to private accounts). This is for the mutual protection and privacy of all staff, pupils and parents, supporting safeguarding best-practice, protecting children against abuse, staff against potential allegations and in line with UK data protection legislation.

Use of any new platform with communication facilities or any child login or storing school/child data must be approved in advance by the school and centrally managed.

Any unauthorised attempt to use a different system may be a safeguarding concern or disciplinary matter and should be notified to the DSL (if by a child) or to the Headteacher (if by a staff member).

Where devices have multiple accounts for the same app, mistakes can happen, such as an email being sent from or data being uploaded to the wrong account. If this a private account is used for communication or to store data by mistake, the DSL/Headteacher/DPO (the particular circumstances of the incident will determine whose remit this is) should be informed immediately.

Behaviour / usage principles

Appropriate behaviour is expected at all times, and communication systems should not be used to send inappropriate materials or language which is or could be construed as bullying, aggressive, rude, insulting, illegal or otherwise inappropriate, or which (for staff) might bring the school into disrepute or compromise the professionalism of staff

Data protection principles will be followed at all times when it comes to all school communications, in line with the school Data Protection Policy and only using the authorised systems mentioned above.

Pupils and staff are NOT allowed to use the email system for personal use and should be aware that all use is monitored, their emails may be read and the same rules of appropriate behaviour apply at all times. Emails using inappropriate language, images, malware or to adult sites may be blocked and not arrive at their intended destination.

See also the social media section of this policy.

Online storage or learning platforms

All the principles outlined above also apply to any system to which you log in online to conduct school business, whether it is to simply store files or data (an online 'drive') or collaborate, learn, teach, etc.

For all these, it is important to consider data protection and cybersecurity before adopting such a platform or service and at all times when using it. Eltham Church of England Primary School has a clear data protection and cybersecurity policy which staff, governors and volunteers must follow at all times.

School website

The school website is a key public-facing information portal for the school community (both existing and prospective stakeholders) with a key reputational value. The Headteacher/Principal and Governors have delegated the day-to-day responsibility of updating the content of the website to Jo Leccacorvi. The site is hosted by Krystal Host.

Where other staff submit information for the website, they are asked to remember:

- Schools have the same duty as any person or organisation to respect and uphold copyright law. Sources must always be credited and material only used with permission.
- Where pupil work, images or videos are published on the website, their identities are protected and full names are not published.
- Pupil images/videos are only made public with parental permission.



Digital images and video

When a pupil/student joins the school, parents/carers are asked if they give consent for their child's image to be captured in photographs or videos, for what purpose (beyond internal assessment, which does not require express consent) and for how long. Parents answer as follows:

- For displays around the school
- For the newsletter
- For use in paper-based school marketing
- For online prospectus or websites
- For social media

Whenever a photo or video is taken/made, the member of staff taking it will check the latest database before using it for any purpose.

Any pupils shown in public facing materials are never identified with more than first name (and photo file names/tags do not include full names to avoid accidentally sharing them) unless specific parental consent has been given.

All staff are governed by their contract of employment and the school's Acceptable Use Policy, which covers the use of mobile phones/personal equipment for taking pictures of pupils, and where these are stored. No member of staff will ever use their personal phone to capture photos or videos of pupils.

Photos are stored on the school cloud platform (Google Workspace) in line with the retention schedule of the school Data Protection Policy.

Staff and parents are reminded annually about the importance of not sharing without permission, due to reasons of child protection (e.g. looked-after children often have restrictions for their own protection), data protection, religious or cultural reasons, or simply for reasons of personal privacy.

Social Media

Eltham Church of England's SM presence

The school has an official Twitter account and will respond to general enquiries about the school, but parents/carers cannot use these channels to communicate about their children. Email is the official electronic communication channel between parents and the school, and between staff and pupils.

Nicola Edwards is responsible for managing our Twitter account and checking our Wikipedia and Google reviews. She follows the guidance in the LGfL / Safer Internet Centre online-reputation management document [here](#).

Staff, pupils' and parents' SM presence

Social media (including here all apps, sites and games that allow sharing and interaction between users) is a fact of modern life, and as a school, we accept that many parents, staff and pupils will use it. However, as stated in the Acceptable Use Policies, which all members of the school community sign, we expect everybody to behave in a positive manner, engaging respectfully with the school and each other on social media, in the same way as they would face to face.

This positive behaviour can be summarised as not making any posts which are or could be construed as bullying, aggressive, rude, insulting, illegal or otherwise inappropriate, or which might bring the school or

(particularly for staff) teaching profession into disrepute. This applies both to public pages and to private posts, e.g. parent chats, pages or groups.

If parents have a concern about the school, we would urge them to contact us directly and in private to resolve the matter. If an issue cannot be resolved in this way, the school complaints procedure should be followed.

Pupils/students are not allowed* to be 'friends' with or make a friend request** to any staff, governors, volunteers and contractors or otherwise communicate via social media.

Pupils/students are discouraged from 'following' staff, governor, volunteer or contractor public accounts (e.g. following a staff member with a public Instagram account). However, we accept that this can be hard to control (but this highlights the need for staff to remain professional in their private lives). In the reverse situation, however, staff must not follow such public student accounts.

* Exceptions may be made, e.g. for pre-existing family links, but these must be approved by the Headteacher, and should be declared upon entry of the pupil or staff member to the school).

** Any attempt to do so may be a safeguarding concern or disciplinary matter and should be notified to the DSL (if by a child) or to the Headteacher (if by a staff member).

Staff are reminded that they are obliged not to bring the school or profession into disrepute and the easiest way to avoid this is to have the strictest privacy settings and avoid inappropriate sharing and oversharing online. They should never discuss the school or its stakeholders on social media and be careful that their personal opinions might not be attributed to the school, or local authority, bringing the school into disrepute.

All members of the school community are reminded that particularly in the context of social media, it is important to comply with the school policy on Digital Images and Video and permission is sought before uploading photographs, videos or any other information about other people.

The statements of the Acceptable Use Policies (AUPs) which all members of the school community have signed are also relevant to social media activity, as is the school's Data Protection Policy.

Device usage

Those with access to school devices must follow rules on the misuse of school technology – devices used at home should be used just like if they were in full view of a teacher or colleague. Please read the following in conjunction with Acceptable Use Policies and the following sections of this document which all impact upon device usage: copyright, data protection, social media, misuse of technology, and digital images and video.

Personal devices including wearable technology and bring your own device (BYOD)

- Refer to the Mobile Phone Usage Policy

Network / internet access on school devices

- **Pupils/students** are not allowed networked file access via personal devices. However, they are allowed to access the school wireless internet network for school-related internet use, using a school device, within the framework of the acceptable use policy. All such use is monitored.

- **Home devices** laptops are issued to some students for use at home. These are restricted to the apps/software installed by the school and may be used for learning and reasonable and appropriate personal use at home, but all usage may be tracked. The devices are monitored when on home wifi connections.
- **All staff who work directly with children** should leave their mobile phones on silent and only use them in private staff areas during school hours. See also the Digital Images and Video Section and Data Protection Policy. Child/staff data should never be downloaded onto a private phone.
- **Volunteers, contractors, governors** can access the guest wireless network but have no access to networked files/drives, subject to the acceptable use policy. All internet traffic is monitored.
- **Parents** have no access to the school network or wireless internet on personal devices.

Trips / events away from school

For school trips/events away from school, teachers will be issued a school duty phone and this number used for any authorised or emergency communications with pupils/students and parents. Any deviation from this policy (e.g. by mistake or because the school phone will not work) will be notified immediately to the Headteacher. Teachers using their personal phone in an emergency will ensure that the number is hidden to avoid a parent or student accessing a teacher's private phone number.

Searching and confiscation

In line with the DfE guidance '[Searching, screening and confiscation: advice for schools](#)', the Headteacher and staff authorised by them have a statutory power to search pupils/property on school premises. This includes the content of mobile phones and other devices, for example as a result of a reasonable suspicion that a device contains illegal or undesirable material, including but not exclusive to sexual images, pornography, violence or bullying.

Appendices and other relevant documents

1. Online Safety Policy Appendix 1 – Roles and Responsibilities
2. Online Safety Policy Appendix 2 – Online Safeguarding Issues
3. Safeguarding and Child Protection Policy
4. Behaviour Policy / Anti-Bullying Policy
5. Staff Code of Conduct / Handbook
6. Acceptable Use Policies (AUPs) for:
 - Pupils
 - Staff
7. Letter to parents about filming/photographing/streaming school events
8. Data protection policy

Online Safety Policy Appendix 1 – Roles and Responsibilities

Table of Contents

Table of Contents.....	14
All staff.....	14
Headteacher – Matthew Wills.....	15
Designated Safeguarding Lead / Online Safety Lead – Matthew Wills	15
Governing Body, led by Online Safety / Safeguarding Link Governor – Daniel Bull.....	17
PSHE / RSHE Lead/s – Lisa Leonard	18
Computing Lead – Alice Grattan	18
Subject / aspect leaders.....	19
Network Manager/technician – ATS.....	19
Data Protection Officer (DPO) – Sarah Ktob	20
Volunteers and contractors	20
Pupils.....	20
Parents/carers.....	21
External groups including parent associations.....	21

The following document contains an indication of the roles and responsibilities around online safety. It is not a binding expectation, and is provided for guidance.

All staff

All staff should sign and follow the staff Acceptable Use Policy (AUP) in conjunction with this policy, the school’s main safeguarding policy, the Staff Handbook and relevant parts of Keeping Children Safe in Education to support a whole-school safeguarding approach.

This includes reporting any concerns, no matter how small, to the designated safety lead as named in the AUP, maintaining an awareness of current online safety issues (see the start of this document for

issues in 2023) and guidance (such as KCSIE), modelling safe, responsible and professional behaviours in their own use of technology at school and beyond and avoiding scaring, victim-blaming language.

Staff should also be aware of the new DfE standards and relevant changes to filtering and monitoring and play their part in feeding back about overblocking, gaps in provision or pupils bypassing protections.

Headteacher – Matthew Wills

Key responsibilities:

- Foster a culture of safeguarding where online safety is fully integrated into whole-school safeguarding
- Oversee the activities of the designated safeguarding lead and ensure that the DSL responsibilities listed in the section below are being followed and fully supported
- Ensure that policies and procedures are followed by all staff
- Undertake training in offline and online safeguarding, in accordance with statutory guidance and relevant Local Safeguarding Partnerships
- Liaise with the designated safeguarding lead on all online-safety issues which might arise and receive regular updates on school issues and broader policy and practice information
- Take overall responsibility for data management and information security ensuring the school's provision follows best practice in information handling; work with the DPO, DSL and governors to ensure a GDPR-compliant framework for storing data, but helping to ensure that child protection is always put first and data-protection processes support careful and legal sharing of information
- Ensure the school implements and makes effective use of appropriate ICT systems and services including school-safe filtering and monitoring, protected email systems and that all technology including cloud systems are implemented according to child-safety first principles
- Be responsible for ensuring that all staff receive suitable training to carry out their safeguarding and online safety roles
- Monitor the use of school technology, online platforms and social media presence and that any misuse/attempted misuse is identified and reported in line with school policy
- Understand and make all staff aware of procedures to be followed in the event of a serious online safeguarding incident
- Ensure suitable risk assessments are undertaken so the curriculum meets needs of pupils, including risk of children being radicalised
- Ensure that there is a system in place to monitor and support staff (e.g. network manager) who carry out internal technical online-safety procedures
- Ensure governors are regularly updated on the nature and effectiveness of the school's arrangements for online safety
- Ensure the school website meets statutory requirements

Designated Safeguarding Lead / Online Safety Lead – Matthew Wills

Key responsibilities (remember the DSL can delegate certain online safety duties, e.g. to the online-safety coordinator, but not the overall responsibility; this assertion and all quotes below are from Keeping Children Safe in Education 2021):

- The DSL should “take **lead responsibility** for safeguarding and child protection (**including online safety and understanding the filtering and monitoring** systems and processes in place).
- Ensure “An effective whole school approach to online safety as per KCSIE
- In 2023/4 working to take up the new responsibility for filtering and monitoring by working closely with technical colleagues, SLT and the new filtering governor to learn more about this area, better understand, review and drive the rationale behind systems in place and initiate regular checks and annual reviews, including support for devices in the home.
- Where online-safety duties are delegated and in areas of the curriculum where the DSL is not directly responsible but which cover areas of online safety (e.g. RSHE), ensure there is regular review and open communication and that the DSL’s clear overarching responsibility for online safety is not compromised or messaging to pupils confused
- Ensure ALL staff and supply staff undergo safeguarding and child protection training (including online-safety) at induction and that this is regularly updated.
 - In 2023/4 this must include filtering and monitoring and help them to understand their roles
 - all staff must read KCSIE Part 1 and all those working with children also Annex B – translations are available in 13 community languages at kcsietranslate.lgfl.net (B the condensed Annex A can be provided instead to staff who do not directly work with children if this is better)
 - cascade knowledge of risks and opportunities throughout the organisation
 - safecpd.lgfl.net has helpful CPD materials including PowerPoints, videos and more
- Ensure that ALL governors and trustees undergo safeguarding and child protection training (including online-safety) at induction to enable them to provide strategic challenge and oversight into policy and practice and that this is regularly updated
- Take day-to-day responsibility for online safety issues and be aware of the potential for serious child protection concerns
- Remind staff of safeguarding considerations as part of a review of remote learning procedures and technology, including that the same principles of online safety and behaviour apply
- Work with the headteacher, DPO and governors to ensure a GDPR-compliant framework for storing data, but helping to ensure that child protection is always put first and data-protection processes support careful and legal sharing of information
- Stay up to date with the latest trends in online safeguarding and “undertake Prevent awareness training.” – see safetraining.lgfl.net and prevent.lgfl.net
- Review and update this policy, other online safety documents (e.g. Acceptable Use Policies) and the strategy on which they are based (in harmony with policies for behaviour, safeguarding, Prevent and others) and submit for review to the governors/trustees.
- Receive regular updates in online safety issues and legislation, be aware of local and school trends – see safeblog.lgfl.net for examples or sign up to the [LGfL safeguarding newsletter](https://lgflsafeguarding.com)
- Ensure that online safety education is embedded across the curriculum in line with the statutory RSHE guidance (e.g. by use of the updated UKCIS framework ‘[Education for a Connected World – 2020 edition](https://educationforaconnectedworld.org)’) and beyond, in wider school life
- Promote an awareness of and commitment to online safety throughout the school community, with a strong focus on parents, but also including hard-to-reach parents – dedicated resources at parentsafe.lgfl.net
- Communicate regularly with SLT and the designated safeguarding and online safety governor/committee to discuss current issues (anonymised), review incident logs and filtering/change control logs and discuss how filtering and monitoring work and have been functioning/helping.



- Ensure all staff are aware of the procedures that need to be followed in the event of an online safety incident, and that these are logged in the same way as any other safeguarding incident.
- Ensure adequate provision for staff to flag issues when not in school and for pupils to disclose issues when off site, especially when in isolation/quarantine/lockdown, e.g. a safe, simple, online form on the school home page about 'something that worrying me' that gets mailed securely to the DSL inbox/
- Oversee and discuss 'appropriate filtering and monitoring' with governors (is it physical or technical?) and ensure staff are also aware (Ofsted inspectors have asked classroom teachers about this). If you use LGfL filtering, view the appropriate filtering statement [here](#). Are you talking to your technical teams? Whilst they will do the technical work, key decisions on what should be allowed are the responsibility of the DSL who should be careful to keep children safe but "be careful that 'over blocking' does not lead to unreasonable restrictions" (KCSIE). [Our Safeguarding Shorts: Filtering for DSLs and SLT](#) twilight provides a quick overview.
- Ensure the updated [2021 DfE guidance on Sexual Violence & Sexual Harassment Between Children in Schools & Colleges](#) Guidance is followed throughout the school and that staff adopt a zero-tolerance, whole school approach to this, as well as to bullying.
- Facilitate training and advice for all staff, including supply teachers:
 - all staff must read KCSIE Part 1 and all those working with children Annex B – translations are available in 12 community languages at kcsietranslate.lgfl.net
 - Annex A is now a condensed version of Part one and can be provided (instead of Part one) to those staff who do not directly work with children, if the governing body or proprietor think it will provide a better basis for those staff to promote the welfare and safeguard children.
 - it would also be advisable for all staff to be aware of Annex D (online safety)
 - cascade knowledge of risks and opportunities throughout the organisation
 - cpd.lgfl.net has helpful CPD materials including PowerPoints, videos and more

Governing Body, led by Online Safety / Safeguarding Link Governor – Daniel Bull

Key responsibilities (quotes are taken from Keeping Children Safe in Education)

- Approve this policy and strategy and subsequently review its effectiveness, e.g. by asking the questions in the helpful document from the UK Council for Child Internet Safety (UKCIS) [Online safety in schools and colleges: Questions from the Governing Board](#)
- Ask about how the school has reviewed protections for **pupils in the home** (including when with online tutors) and **remote-learning** procedures, rules and safeguards (see remotesafe.lgfl.net for guidance to policies and an infographic overview of safeguarding considerations for remote teaching technology.
- "Ensure an appropriate **senior member** of staff, from the school or college **leadership team**, is appointed to the role of DSL [with] **lead responsibility** for safeguarding and child protection (including online safety) [with] the appropriate status and authority [and] time, funding, training, resources and support..."
- Support the school in encouraging parents and the wider community to become engaged in online safety activities
- Have regular strategic reviews with the online-safety coordinator / DSL and incorporate online safety into standing discussions of safeguarding at governor meetings



- Where the online-safety coordinator is not the named DSL or deputy DSL, ensure that there is regular review and open communication between these roles and that the DSL's clear overarching responsibility for online safety is not compromised
- Work with the DPO, DSL and headteacher to ensure a GDPR-compliant framework for storing data, but helping to ensure that child protection is always put first and data-protection processes support careful and legal sharing of information
- Check all school staff have read Part 1 of KCSIE; SLT and all working directly with children have read Annex B; check that Annex D on Online Safety reflects practice in your school
- "Ensure that all staff undergo safeguarding and child protection training (including online safety) at induction. The training should be regularly updated [...] in line with advice from the local three safeguarding partners [...] integrated, aligned and considered as part of the overarching safeguarding approach." There is further support for this at cpd.lgfl.net
- "Ensure appropriate filters and appropriate monitoring systems are in place [but...] be careful that 'overblocking' does not lead to unreasonable restrictions as to what children can be taught with regard to online teaching and safeguarding". LGfL's appropriate filtering submission is [here](#)
- "Ensure that children are taught about safeguarding, including online safety [...] as part of providing a broad and balanced curriculum [...] Consider a whole school or college approach to online safety [with] a clear policy on the use of mobile technology."

PSHE / RSHE Lead/s – Lisa Leonard

Key responsibilities:

- As listed in the 'all staff' section, plus:
- Embed consent, mental wellbeing, healthy relationships and staying safe online into the PSHE / Relationships education, relationships and sex education (RSE) and health education curriculum. "This will include being taught what positive, healthy and respectful online relationships look like, the effects of their online actions on others and knowing how to recognise and display respectful behaviour online. Throughout these subjects, teachers will address online safety and appropriate behaviour in an age appropriate way that is relevant to their pupils' lives."
- This will complement the computing curriculum, which covers the principles of online safety at all key stages, with progression in the content to reflect the different and escalating risks that pupils face. This includes how to use technology safely, responsibly, respectfully and securely, and where to go for help and support when they have concerns about content or contact on the internet or other online technologies.
- Work closely with the DSL/OSL and all other staff to ensure an understanding of the issues, approaches and messaging within PSHE / RSHE.
- Note that an RSHE policy should now be included on the school website.
- Work closely with the Computing subject leader to avoid overlap but ensure a complementary whole-school approach, and with all other lead staff to embed the same whole-school approach

Computing Lead – Alice Grattan

Key responsibilities:

Updated: July 2023 © LGfL – DigiSafe is an LGfL brand – view this document & more at safepolicies.lgfl.net



- As listed in the 'all staff' section, plus:
- Oversee the delivery of the online safety element of the Computing curriculum in accordance with the national curriculum
- Work closely with the RSHE lead to avoid overlap but ensure a complementary whole-school approach
- Work closely with the DSL/OSL and all other staff to ensure an understanding of the issues, approaches and messaging within Computing
- Collaborate with technical staff and others responsible for ICT use in school to ensure a common and consistent approach, in line with acceptable-use agreements

Subject / aspect leaders

Key responsibilities:

- As listed in the 'all staff' section, plus:
- Look for opportunities to embed online safety in your subject or aspect, especially as part of the new RSHE curriculum, and model positive attitudes and approaches to staff and pupils alike
- Consider how the UKCIS framework Education for a Connected World and Teaching Online Safety in Schools can be applied in your context
- Work closely with the DSL/OSL and all other staff to ensure an understanding of the issues, approaches and messaging within Computing
- Ensure subject specific action plans also have an online-safety element

Network Manager/technician – ATS

Key responsibilities:

- As listed in the 'all staff' section, plus:
- Support the HT and DSL team as they review protections for **pupils in the home** and **remote-learning** procedures, rules and safeguards (see remotesafe.lgfl.net for guidance to policies and an infographic overview of safeguarding considerations for remote teaching technology).
- Keep up to date with the school's online safety policy and technical information in order to effectively carry out their online safety role and to inform and update others as relevant
- Meet the RSHE lead to see how the online-safety curriculum delivered through this new subject can complement the school IT system and vice versa, and ensure no conflicts between educational messages and practice.
- Work closely with the designated safeguarding lead / online safety lead / data protection officer / LGfL nominated contact to ensure that school systems and networks reflect school policy
- Ensure the above stakeholders understand the consequences of existing services and of any changes to these systems (especially in terms of access to personal and sensitive records / data and to systems such as YouTube mode, web filtering settings, sharing permissions for files on cloud platforms etc
- Support and advise on the implementation of 'appropriate filtering and monitoring' as decided by the DSL and senior leadership team
- Maintain up-to-date documentation of the school's online security and technical procedures
- To report online-safety related issues that come to their attention in line with school policy



- Manage the school's systems, networks and devices, according to a strict password policy, with systems in place for detection of misuse and malicious attack, with adequate protection, encryption and backup for data, including disaster recovery plans, and auditable access controls
- Network managers/technicians at LGfL schools may want to ensure that you take advantage of the following solutions which are part of your package: Sophos Anti-Virus, Sophos Anti-Phish, Sophos InterceptX, Sophos Server Advance, Malware Bytes, Egress, Meraki Mobile Device Management and CloudReady/NeverWare. These solutions which are part of your package will help protect the network and users on it

Data Protection Officer (DPO) – Sarah Ktob

Key responsibilities:

- Alongside those of other staff, provide data protection expertise and training and support the DP and cybersecurity policy and compliance with those and legislation and ensure that the policies conform with each other and with this policy.
- Not prevent, or limit, the sharing of information for the purposes of keeping children safe. As outlined in *Data protection in schools, 2023*, "It's not usually necessary to ask for consent to share personal information for the purposes of safeguarding a child." And in KCSIE 2023, "The Data Protection Act 2018 and UK GDPR do not prevent the sharing of information for the purposes of keeping children safe. Fears about sharing information must not be allowed to stand in the way of the need to safeguard and promote the welfare and protect the safety of children."
- Note that retention schedules for safeguarding records may be required to be set as 'Very long term need (until pupil is aged 25 or older)'. However, some local authorities require record retention until 25 for all pupil records. An example of an LA safeguarding record retention policy can be read at safepolicies.lgfl.net, but you should check the rules in your area.
- Ensure that all access to safeguarding data is limited as appropriate, and also monitored and audited

Volunteers and contractors

Key responsibilities:

- Read, understand, sign and adhere to an acceptable use policy (AUP)
- Report any concerns, no matter how small, to the designated safety lead / online safety coordinator as named in the AUP
- Maintain an awareness of current online safety issues and guidance
- Model safe, responsible and professional behaviours in their own use of technology at school and as part of remote teaching or any online communications

Pupils

Key responsibilities:

Read, understand, sign and adhere to the student/pupil acceptable use policy

Parents/carers

Key responsibilities:

- Read, sign and adhere to the school's parental acceptable use policy (AUP), read the pupil AUP and encourage their children to follow it

External groups including parent associations

Key responsibilities:

- Any external individual/organisation will sign an acceptable use policy prior to using technology or the internet within school
- Support the school in promoting online safety and data protection
- Model safe, responsible, respectful and positive behaviours in their own use of technology, including on social media: not sharing other's images or details without permission and refraining from posting negative, threatening or violent comments about others, including the school staff, volunteers, governors, contractors, pupils or other parents/carers

Online Safety Policy Appendix 2 – Online Safeguarding Issues

This provides further information on some of the current safeguarding issues that are of particular concern.

Current Online Safeguarding Trends

In our school over the past year, we have particularly noticed the following in terms of device use and abuse and types of online/device-based incidents which affect the wellbeing and safeguarding of our students: [insert information from your school community here. **Please do not be tempted to skip this part**; information specific to your setting is invaluable and in many ways more important than what is written below. You should find the results of your online safety audit a useful source of information]

Nationally, some of the latest trends of the past twelve months are outlined below. These should be reflected in this policy and the acceptable use agreements we use, and seen in the context of the 5 Cs (see KCSIE for more details), a whole-school contextual safeguarding approach that incorporates policy and practice for curriculum, safeguarding and technical teams.

We may be updating this policy during the year to reflect any changes resulting from the Online Safety Bill being passed into law.

Self-generative artificial intelligence has been a significant change, with students having often unfettered access to tools that generate text and images at home or in school. These tools not only represent a challenge in terms of accuracy when young people are genuinely looking for information, but also in terms of plagiarism for teachers and above all safety: none of the mainstream tools have end-user safety settings, most have an age limit of 13 or even 18 and in spite of basic rude words not delivering results, will easily produce inappropriate material. Schools not only need to tackle this in terms of what comes into school but also educating young people and their parents on use of these tools in the home.

The continued cost-of-living crisis has meant that children have spent more time online and therefore exposed to all manner of online harms as families have had to cut back on leisure activities and the public provision of free activities for young people has reduced further.

Against this background, the Ofcom 'Children and parents: media use and attitudes report 2023' has shown that YouTube remains the most used site or app among all under 18s and the reach of WhatsApp, TikTok and Snapchat increased yet further. As a school we recognise that many of our children and young people are on these apps regardless of age limits, which are often misunderstood or ignored. We therefore remember to remind about best practice while remembering the reality for most of our students is quite different.

This is striking when you consider that 20% of 3-4 year olds have access to their OWN mobile phone (let alone shared devices), rising to over 90 percent by the end of Primary School, and the vast majority have no safety controls or limitations to prevent harm or access to inappropriate material. At the same time, even 3 to 6 year olds are being tricked into 'self-generated' sexual content (Internet Watch Foundation Annual Report) while considered to be safely using devices in the home and the 7-10 year old age group is the fastest growing for this form of child sexual abuse material, up 60 percent within 12 months to represent over 60,000 cases found (of this same kind where the abuser is not present).

In the past year, more and more children and young people used apps such as snapchat as their source of news and information, with little attention paid to the veracity of influencers sharing news. The 2023 Revealing-Reality: Anti-social-Media Report highlights that this content is interspersed with highly regular exposure to disturbing, graphic and illegal content such as fights, attacks, sexual acts and weapons. At the same time, the Children's Commissioner revealed the ever younger children are regularly consuming pornography and living out inappropriate behaviour and relationships due to 'learning from' pornography. This has coincided with the rise of misogynistic influencers such as Andrew Tate, which had a significant influence on many young boys over the past year which schools have had to counter.

From the many schools that LGfL spoke to over the past year, there was a marked increase in the number of schools having issues with fights being filmed and shared, a disturbing increase in the cases of self-harm and sexual abuse being coerced with threats of violence (many even in primary schools).

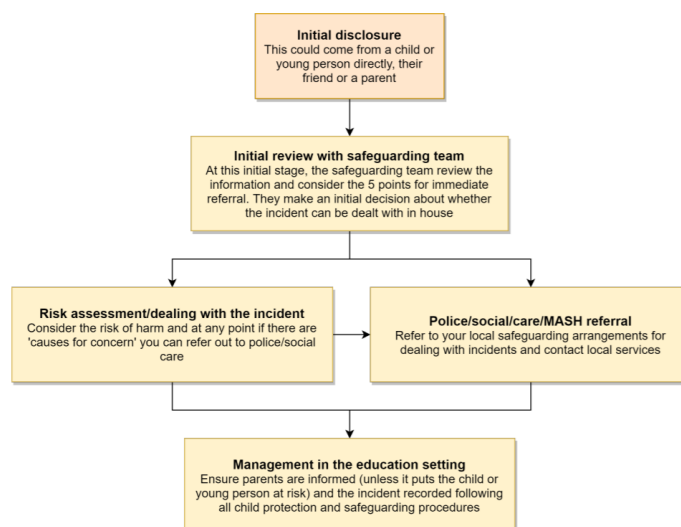
There has been a significant increase in the number of fake profiles causing issues in schools, both for schools – where the school logo and/or name have been used to share inappropriate content about students and also spread defamatory allegations about staff, and also for students, including where these are used to bully others (sometimes even pretending to be one student to bully a second student).

Sexting – sharing nudes and semi-nudes

All schools (regardless of phase) should refer to the updated UK Council for Internet Safety (UKCIS) guidance on sexting - now referred to as [Sharing nudes and semi-nudes: advice for education settings](#) to avoid unnecessary criminalisation of children. NB - where one of the parties is over 18, this is no longer sexting but child sexual abuse.

There is a one-page overview called [Sharing nudes and semi-nudes: how to respond to an incident](#) for all staff (not just classroom-based staff) to read, in recognition of the fact that it is mostly someone other than the designated safeguarding lead (DSL) or online safety lead to first become aware of an incident, and it is vital that the correct steps are taken. Staff other than the DSL must not attempt to view, share or delete the image or ask anyone else to do so, but to go straight to the DSL.

The school DSL will in turn use the full guidance document, [Sharing nudes and semi-nudes – advice for educational settings](#) to decide next steps and whether other agencies need to be involved.



***Consider the 5 points for immediate referral at initial review:**

1. The incident involves an adult
2. There is reason to believe that a child or young person has been coerced, blackmailed or groomed, or there are concerns about their capacity to consent (for example, owing to special educational needs)
3. What you know about the images or videos suggests the content depicts sexual acts which are unusual for the young person's developmental stage, or are violent
4. The images involves sexual acts and any pupil in the images or videos is under 13
5. You have reason to believe a child or young person is at immediate risk of harm owing to the sharing of nudes and semi-nudes, for example, they are presenting as suicidal or self-harming

It is important that everyone understands that whilst sexting is illegal, pupils/students can come and talk to members of staff if they have made a mistake or had a problem in this area.

The documents referenced above and materials to support teaching about sexting can be found at sexting.lgfl.net

Upskirting

It is important that everyone understands that upskirting (taking a photo of someone under their clothing, not necessarily a skirt) is now a criminal offence, as highlighted in Keeping Children Safe in Education and that pupils/students can come and talk to members of staff if they have made a mistake or had a problem in this area.

Bullying

Online bullying should be treated like any other form of bullying and the school bullying policy should be followed for online bullying, which may also be referred to as cyberbullying, including issues arising from banter. Materials to support teaching about bullying and useful Department for Education guidance and case studies are at bullying.lgfl.net

Sexual violence and harassment

DfE guidance on sexual violence and harassment is referenced in Keeping Children Safe in Education and also a document in its own right. It would be useful for all staff to be aware of this guidance: paragraphs 45-49 cover the immediate response to a report and confidentiality which is highly relevant for all staff; the case studies section provides a helpful overview of some of the issues which may arise.

Any incident of sexual harassment or violence (online or offline) should be reported to the DSL who will follow the full guidance. Staff should work to foster a zero-tolerance culture. The guidance stresses that schools must take all forms of sexual violence and harassment seriously, explaining how it exists on a continuum and that behaviours incorrectly viewed as 'low level' are treated seriously and not allowed to perpetuate. The document makes specific reference to behaviours such as bra-strap flicking and the careless use of language.

Misuse of school technology (devices, systems, networks or platforms)

Clear and well communicated rules and procedures are essential to govern pupil and adult use of school networks, connections, internet connectivity and devices, cloud platforms and social media (both when on school site and outside of school).

These are defined in the relevant Acceptable Use Policy as well as in this document, for example in the sections relating to the professional and personal use of school platforms/networks/clouds, devices and other technology.

Where pupils contravene these rules, the school behaviour policy will be applied; where staff contravene these rules, action will be taken as outlined in the staff code of conduct/handbook.

It will be necessary to reinforce these as usual at the beginning of any school year but also to remind pupils that **the same applies for any home learning** that may take place in future periods of absence/closure/quarantine etc.

Further to these steps, the school reserves the right to withdraw – temporarily or permanently – any or all access to such technology, or the right to bring devices onto school property.

Social media incidents

See the Social Media Section of this document for rules and expectations of behaviour for children and adults in the school's community. These are also governed by the school's Acceptable Use Policies.

Breaches will be dealt with in line with the school behaviour policy (for pupils) or code of conduct/handbook (for staff).

Further to this, where an incident relates to an inappropriate, upsetting, violent or abusive social media post by a member of the school community, the school will request that the post be deleted and will expect this to be actioned promptly.

Where an offending post has been made by a third party, the school may report it to the platform it is hosted on, and may contact the Professionals' Online Safety Helpline, POSH, (run by the UK Safer Internet Centre) for support or help to accelerate this process.